

SIGNODE QUICK-CHANGE™

Revolution™

Automatic Down-packing Strapping System



Featuring the M-634 strapping head



- ***Fully automatic system***
- ***Modular design***
- ***Joint rotation***

SIGNODE®

Automatic Down-packing Strapping System

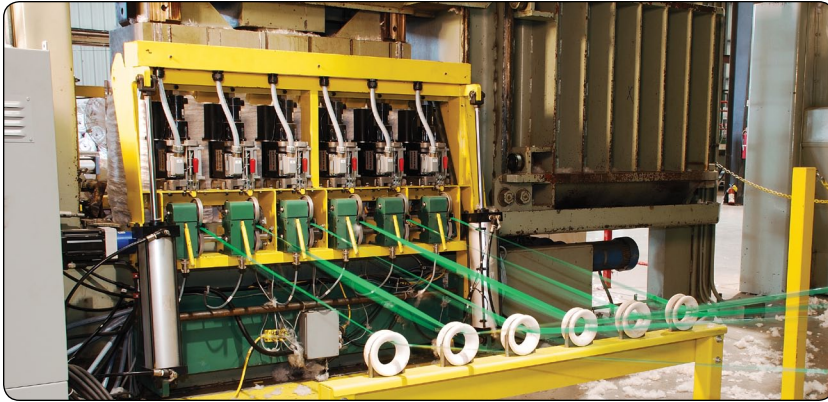
Featuring the M-634 strapping head

SIGNODE QUICK-CHANGE

Revolution

Signode's fully automatic down-packing strapping system is designed to reduce maintenance costs and accommodate faster production speeds. Featuring a modular design that simplifies maintenance, the system is simple to operate and easy to maintain, maximizing productivity and decreasing downtime.

Head side



Rear chutes

Minimize downtime

The Revolution down-packing system is equipped with automatic refeed. This feature automatically attempts to refeed the strap up to three times when an obstruction is impeding the strap feeding process.

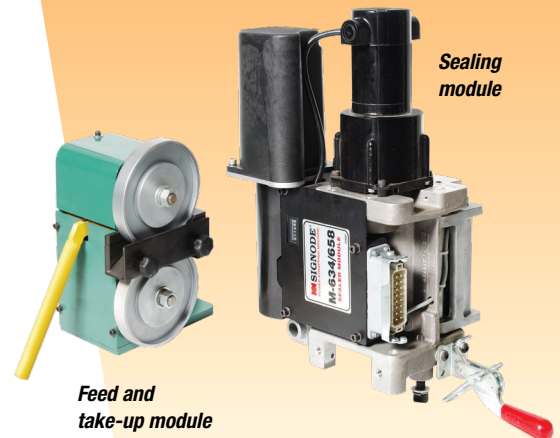
Maximize productivity

The system can apply up to six straps simultaneously, eliminating the indexing time needed to apply multiple straps. This timesaving feature, combined with a cycle time as short as 10 seconds, maximizes productivity and efficiency.

Superior joint protection

The Revolution down-packing system features a joint rotation mechanism that rotates the strap joint to the ball of the bale. Relocating the joint protects it from the stresses of stacking and rough handling in the warehouse.

M-634 modular strapping head



The M-634 system features a separate feed/take-up module and sealing module. All modules are lightweight, easy to access and slide out quickly for routine maintenance, minimizing downtime. Sealing modules can be removed and replaced between bales, enabling operators to perform maintenance while continuing to operate at full capacity.

- Designed specifically for baling operations
- All-electric operation
- Patented Z-weld sealless joint approved by the National Cotton Council

SIGNODE

Signode Packaging Systems
3650 West Lake Avenue
Glenview, Illinois 60026
1-888-FIBERS-0
(1-888-342-3770)
www.signode.com